



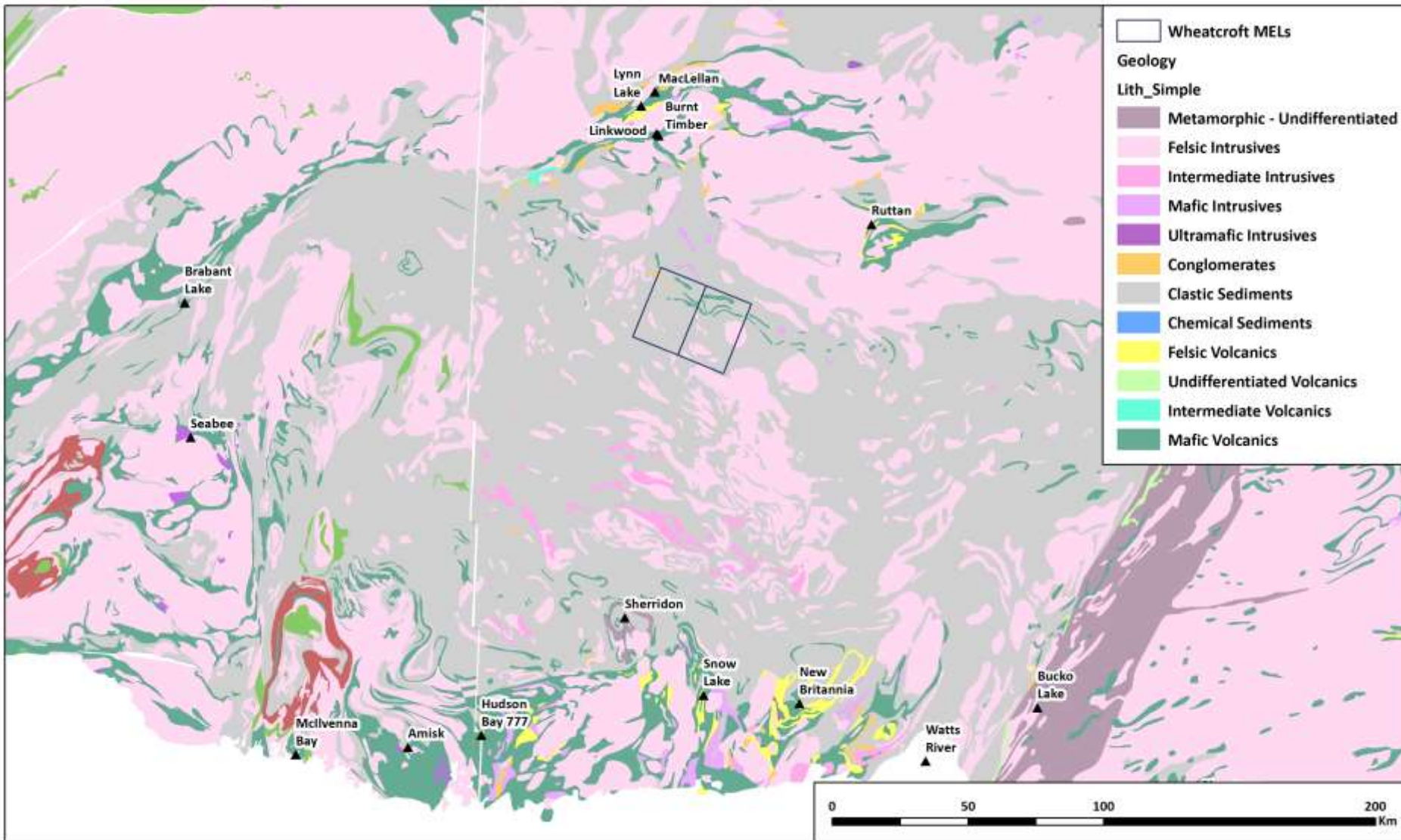
**JAYDEN**

Resources Inc.

**Wheatcroft Lake 2022 Surface Program**

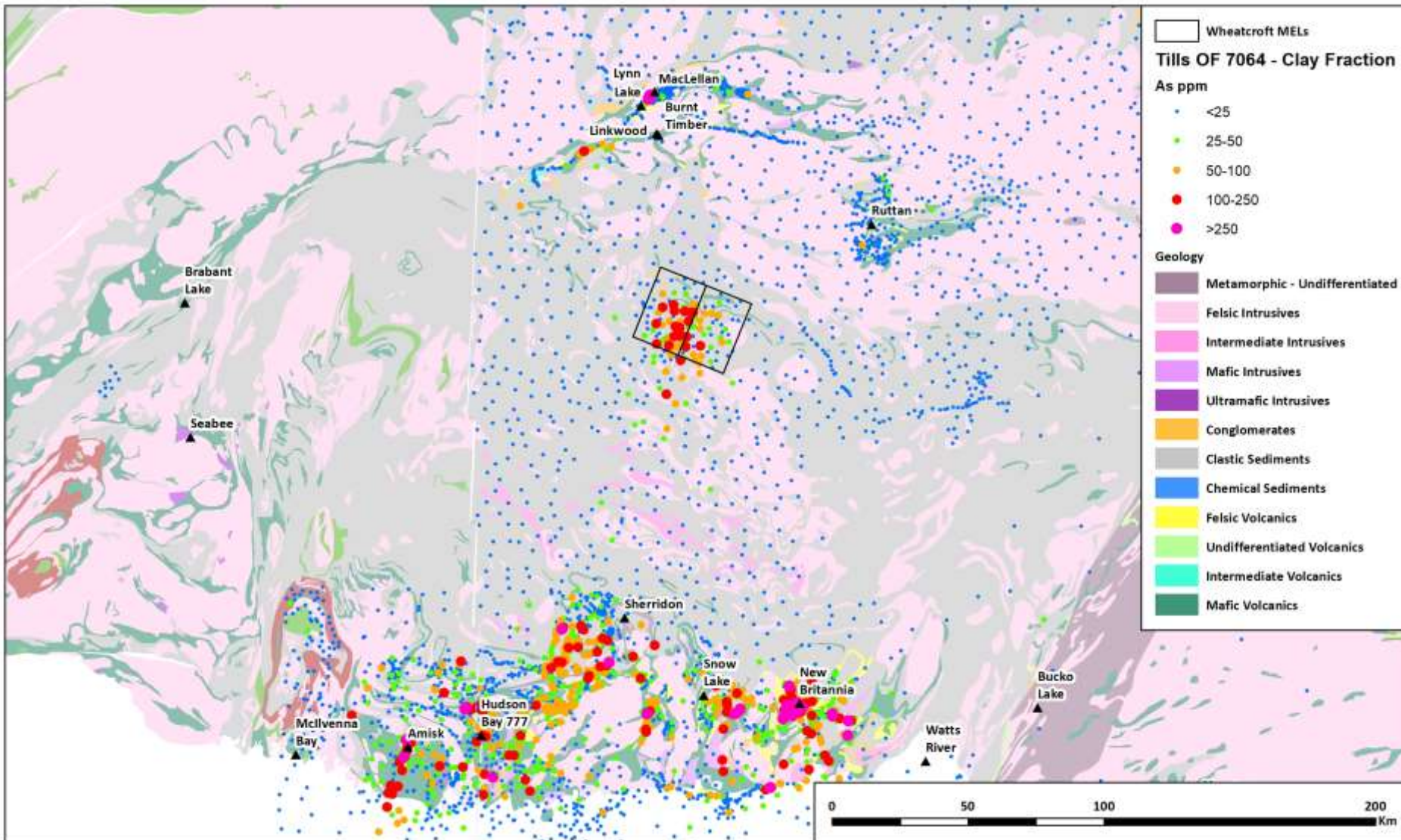
November 2022





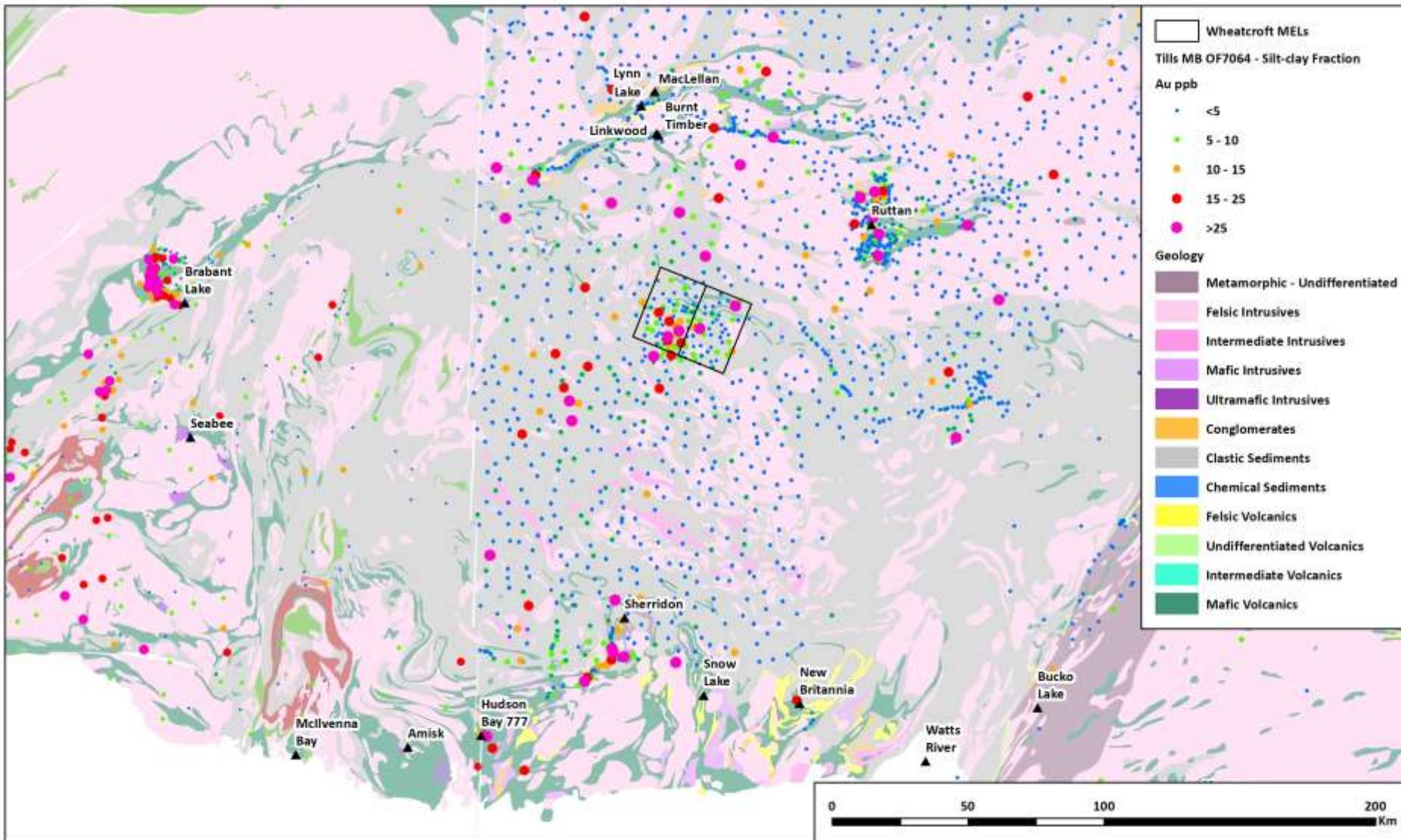
- The Wheatcroft Lake project is located on the northern margin of the Kiseynew sedimentary basin
- Amphibolite metavolcanics at the contact between Sickle Group arkosic gneiss and Burntwood greywacke-mudstone gneiss
- Local metaconglomerate gneiss

# As Till Geochemistry



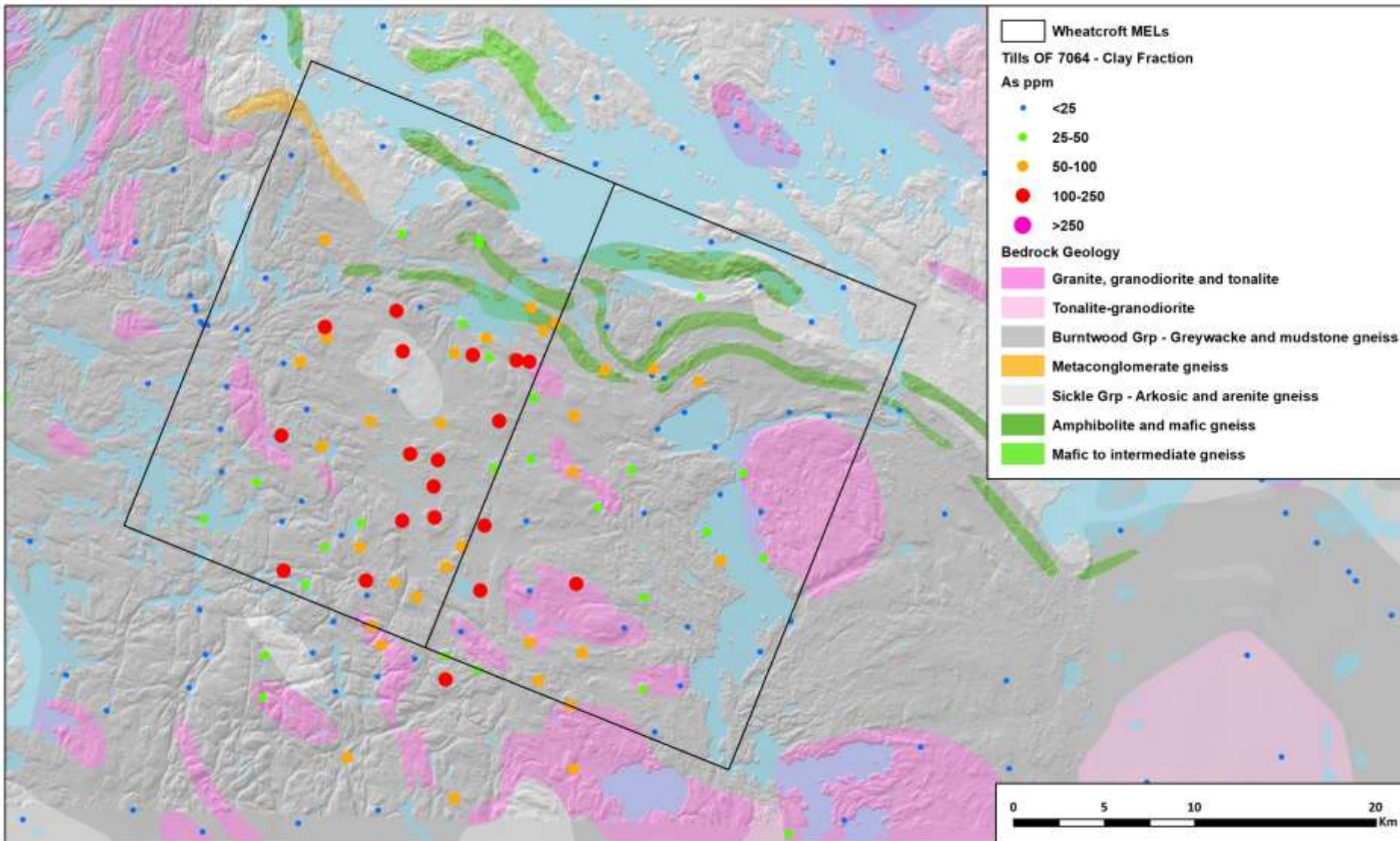
- 2km x 2km spacing regional survey
- Extensive As in clay fraction till anomaly in the Wheatcroft area
- Ice direction perpendicular to geology: head of anomaly represents 12km strike length of source
- Similar in scale to the Snow Lake and Flin Flon areas

# Au Till Geochemistry



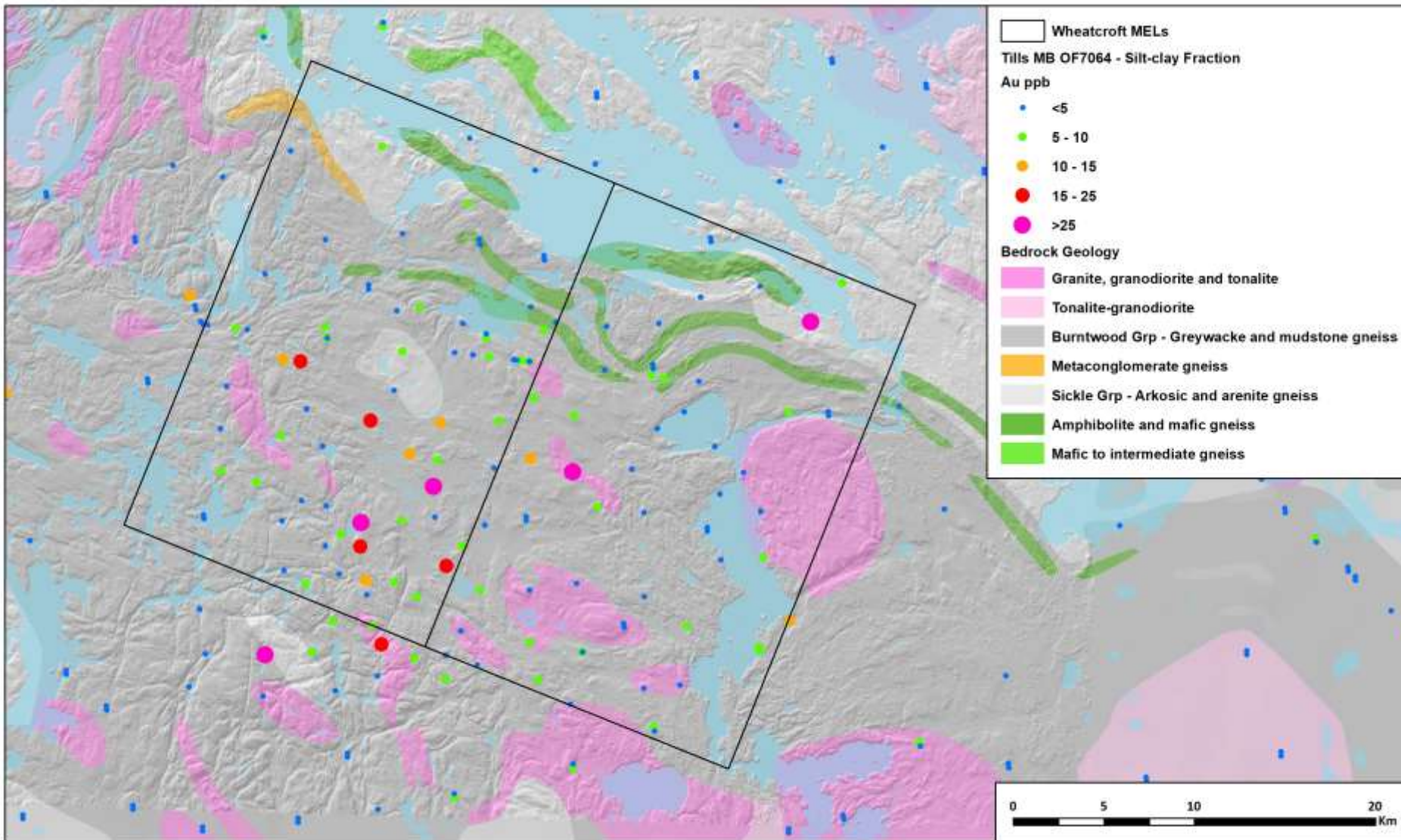
- 2km x 2km spacing regional survey
- Au anomalism in silt-clay fraction is associated with As anomalism at Wheatcroft
- Similar anomalism in the Flin Flon belt

# Wheatcroft As Till Geochemistry



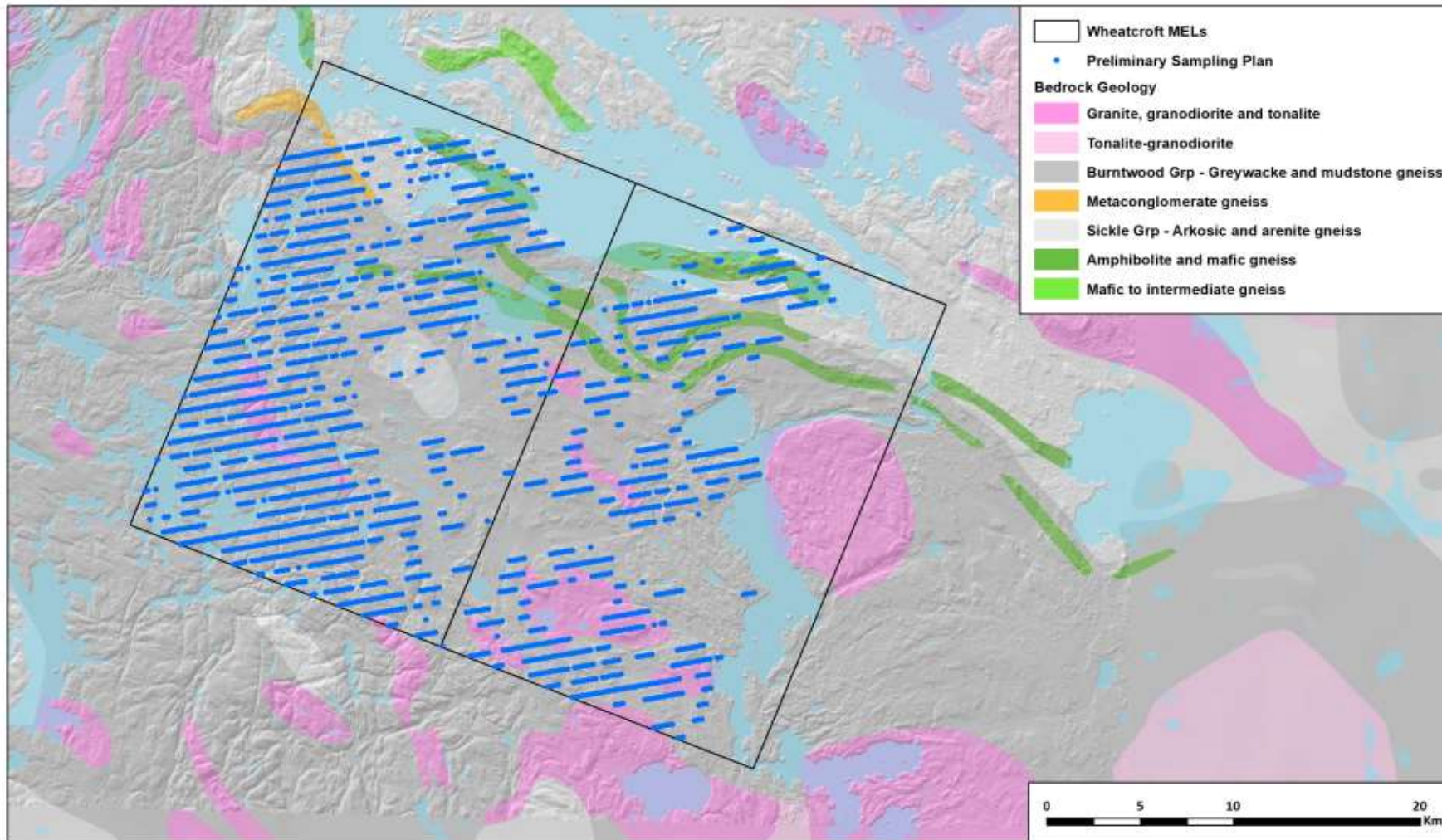
- 1987 GSC till sampling program, ~2km spacing
- Extensive As anomaly in clay fraction over ~12km strike length, extends over 30km down ice
- Head of As anomalism is at amphibolite gneiss

# Wheatcroft Au Till Geochemistry



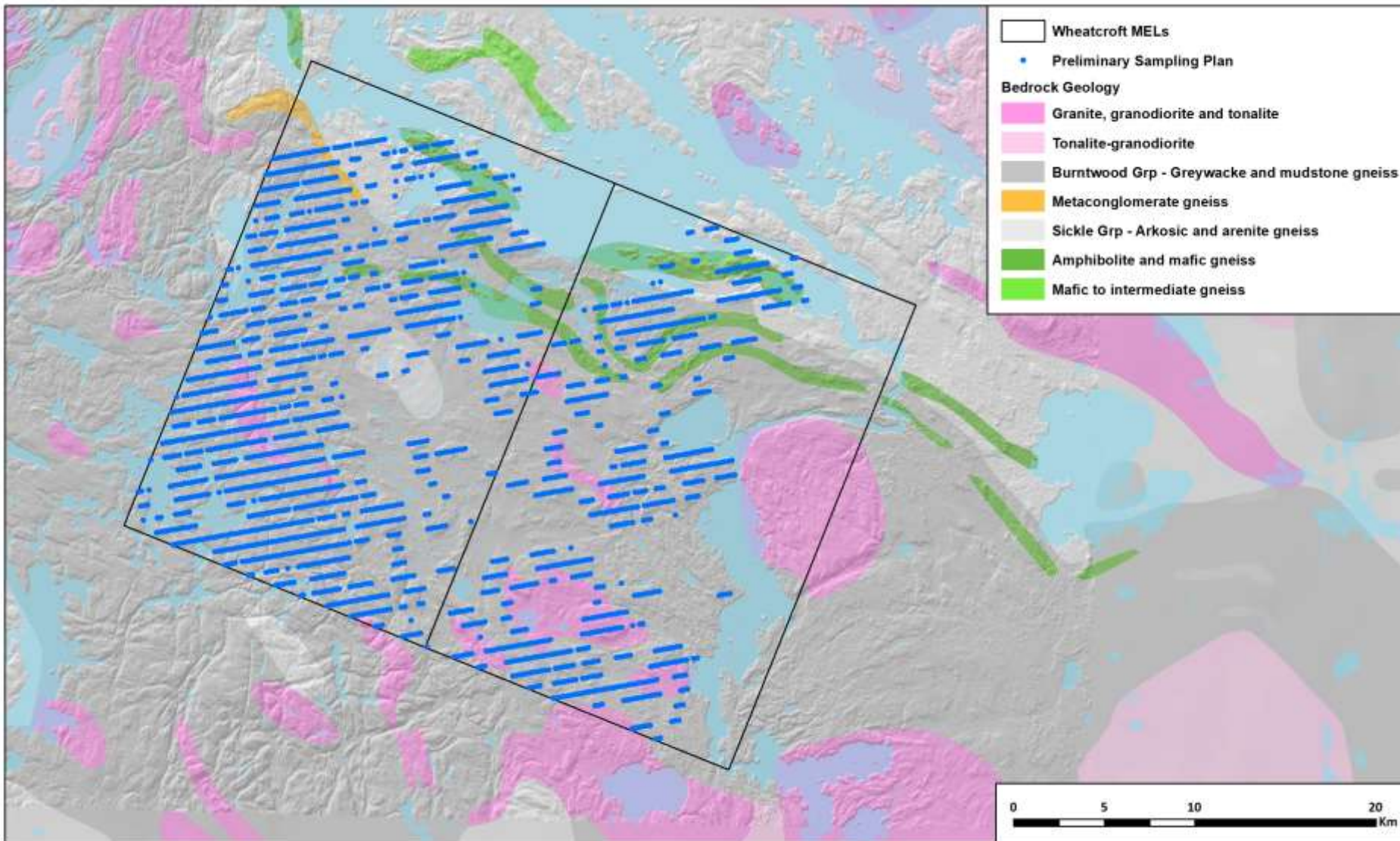
- 1987 GSC till sampling program, ~2km spacing
- Extensive Au anomaly in silt-clay fraction over ~12km strike length
- Head of Au anomalism is down ice from historical drill area

# Wheatcroft Fall 2022 Till Sampling Program



- First-pass regional sampling program
- 200 x 800m spaced grid
- ~2400 sample till samples (b-horizon)
- Base out of Leaf Rapids, Manitoba (Heli-supported program)
- Objective: Generate target areas for Phase 2 follow-up till sampling, geophysics, prospecting

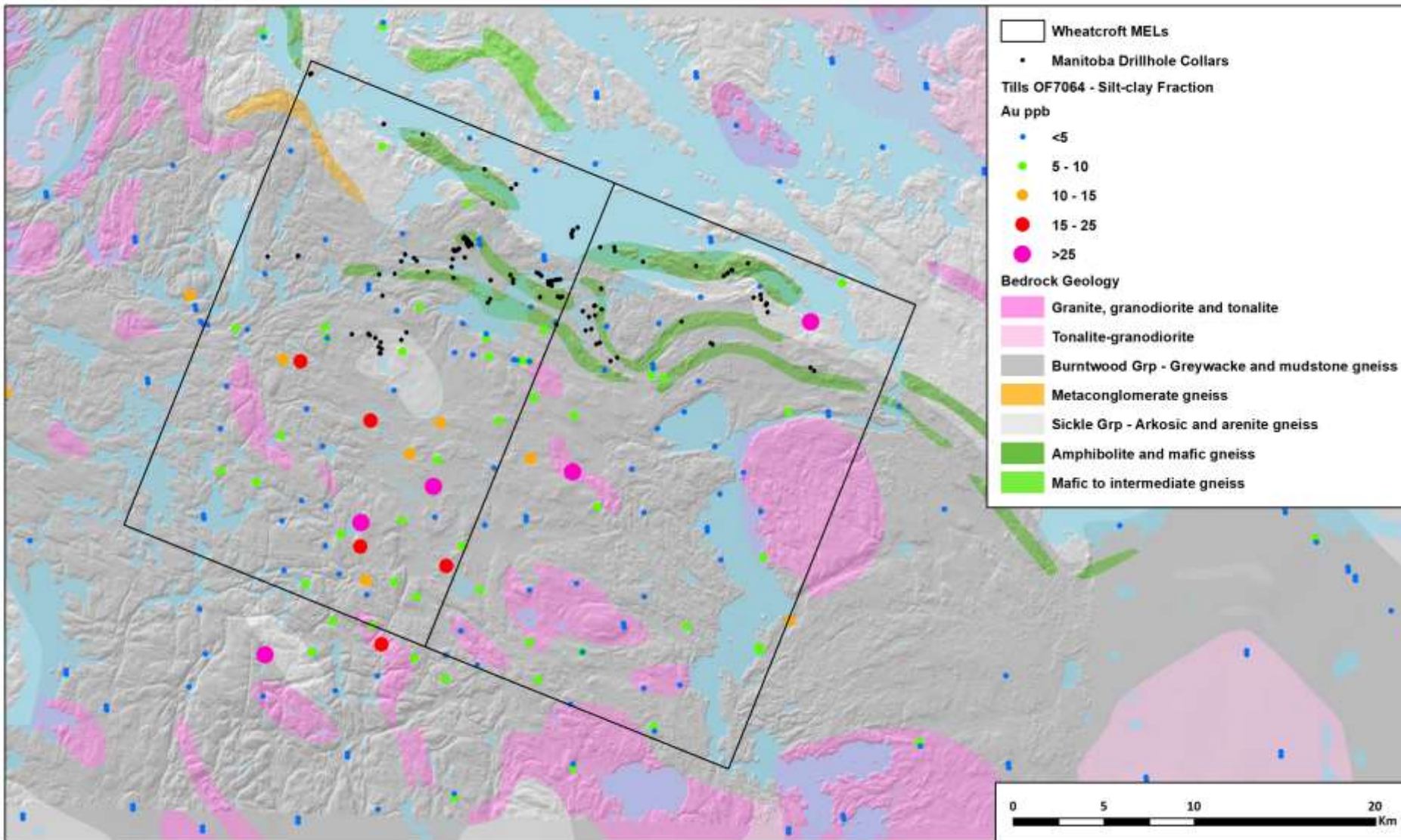
# Wheatcroft Fall 2022 Till Sampling Program



- 2<sup>nd</sup> pass infill till sampling on regional Au-As anomaly
- 200 x 800m spaced grid
- ~2400 sample till samples
  - (B-horizon)
- Base out of Leaf Rapids, Manitoba
  - (Heli-supported program)
- Objective: Generate target areas for Phase 2 follow-up till sampling, geophysics, prospecting



# Wheatcroft Summary



- The Wheatcroft area is prospective for shear zone hosted quartz vein/sulphide Au mineralization
- Limited historical follow-up on a large regional Au-As in till anomaly provides unique opportunity for systematic exploration
- Exploration Strategy
  - LIDAR/Surficial Interp (complete)
  - Surface Till Sampling in Highlands, areas of good till coverage
  - Follow-up till sampling on anomalous results, in lowlands
  - Geophysics, Prospecting Drilling